

Nga mihi, mālō e lelei, talofa lava, kia orana, bula, namaste, talofa ni, fakalofa lahi atu, sabiadee, ola, bonjour, ni hao, welcome, konichi wa, আবে

Term 2, Week 8 Wednesday 10 June 2026

Theme: Migration/Citizenship (Ngā Neke me te Mana Tangata)

Value: Diversity

Faafetai tele lava to Masina Va'aia and our community

Thank you to Mrs Neemia and the Masina Va'aia staff for organising Samoa Language Week this year. From the Ava ceremony to the performances on Friday, it was lovely to showcase the Samoa culture, language and identity here at Sutton Park School.

Faafetai lava to our parents who supported the programme throughout last week, it was good to see you all involved. I am looking forward to the other Pasifika language weeks to come.

Right: Emily R2 in her traditional Samoan attire.



This is already Week 8

We are nearing the end of Term 2. Our attendance needs to be consistent, ensuring that our children come to school every day. Our teachers are busy with report writing, which will be handed out in the last week of the term, and we have sports teams are going out to represent our school, so there is a lot happening. A big push for you as parents to continue supporting our children to come to school. I do know it is cold in the mornings but students will be looked after well at school.

I want to remind you of the 'Parents Statement of Commitment' that you, as parents of our school, agreed upon:

- Ensure my child is in a safe and supportive environment at school and home
- Be an active parent in my child's learning journey and work together with the school
- Send my child to school ready to learn every day
- Build a strong parent-teacher partnership and work together for success
- Build confidence in my child's culture and identity and help them feel proud

Upcoming Term 2 Curriculum Day

On Friday 3rd July 2026, the last day of Term 2, there will be no school for our students. Our staff will have a Curriculum Day, planning for Term 3.



Fata Vaitimu Togi Lemanu, Principal



2026 Term 2 Dates: Last day of T2 is Thursday 2 July Week 8: Tread Lightly Programme

Wed. 10 June: LIT at Bader Int for School Leaders 3.15pm

Thurs. 11 June: Moana classes Community Swim programme at Moana Nui o Kiwa Pools
: Masina Va'aia Parents Meeting 4.30pm

Friday 12 June: Mufti Day – gold coin donations for Sia Ua
: Mr Whippy for Best Attendance W7

Week 9: Tread Lightly Programme

Mon. 15 June: Aorangi classes Community Swim programme at Moana Nui o Kiwa Pools
: Y5&6 Boy's Hockey @ Kolmar Centre

Tues 16 June: Bike Ready Programme for Aorangi Students
: community clean-up
: Board of Trustees Meeting 4.30pm

Wed. 17 June: Bike Ready Programme for Aorangi Students
: Rumaki Whanau Hui 4pm

Thurs. 18 June: FAGASA Y5&6 speech comp. @ Otahuhu Primary
: Bike Ready Programme for Aorangi Students
: Moana classes Community Swim programme at Moana Nui o Kiwa Pools

Friday 19 June: FAGASA Y7&8 speech comp. @ Sutton Park
: Bike Ready Programme for Aorangi Students
: Mr Whippy for Best Attendance W8

: **Wear Yellow for Harold**- gold coin donation

Week 10:

Mon. 22 June: Y5&6 Girls Hockey @ Kolmar Centre
: Aorangi classes Community Swim programme at Moana Nui o Kiwa Pools

Tues. 23 June: R10 & 11 Trip to Maritime Museum

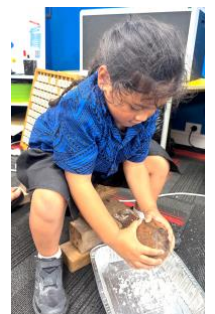
Wed. 24 June: R2 & 3 Trip to Maritime Museum
: LIT at Bader Int for School Leaders 3.15pm

Thurs. 25 June: R8 & 9 Trip to Maritime Museum
: Moana classes Community Swim programme at Moana Nui o Kiwa Pools

Friday 26 June: Mr Whippy for Best Attendance W9
: Mufti day- gold coin donations for Masina Va'aia
: 2pm House Sports
: 5pm Masina Va'aia Po Siva in the hall

Students of the Week (W7)

R3 Cain, R4 Mele M, R4A Leiola, R5 Simana, R6 'Ofa, R6B Kesaia, R7 Tevita, R8 Isabel, R9 Kalolaine, R9A Moala, Rumaki Viliami, R11 Adiana, R11A Haydein, R12 Jayden, R13A Paulo, R13B O'Shea, R14 Heather-Lilly, R15 Blessing, R16 Vanesa, R17 MJ, R18 Iva, R20 Penelope, R21 Dhriti, and R24 Lesley



Photos Above L-R : Alatini, Alayna and Quavious R13B learned to scrape coconut flesh on a tuai and made panikeke for their morning tea during Samoa Language Week.

Photo Left: Leopoli R3 on his way to score a try for SPS in the Under 55kg boy's rugby last week.



Sutton Park School Newsletter – 10 June 2026

Ph. 276-4560

Email: office@suttonpark.school.nz

Winter Wellbeing

Early mornings are getting cold and so we need to ensure that our children are coming to school nice and warm. Parents, this is your responsibility - it saddens me when I see children come to school early in the morning with no school jumper or jacket and no shoes and it is very cold. This then starts a ripple effect of children becoming sick due to cold and flu by simply not keeping warm. We can help out if you are finding it difficult to provide. You need to let our SWIS Eunice know if you need any help: Ph 021 417 321 or email eunice@mefsc.org.nz. We also provide breakfast from Tuesday to Friday.

Rumaki Pipi Korero

Tau Ako 1-4
Left to right:
Emaia TA1,
Michael P. TA2,
Te Ohomairangi TA3, Neema TA4 with judges Heeni Mohi and Te Wairemana Emery-Taipari.



Our School Facebook Page

I encourage you all, if you have not done so, to join our Sutton Park School Facebook page. A lot of information will be put up on our page, even before our weekly newsletter.

Reminder

Please let the office know if you have changed your address, email or phone numbers. You can do this via the school website, call, email or visit the school office.

Uniform Donations

We welcome any washed uniforms that your child may have outgrown or no longer requires. Please drop off to the office.

Student Safety

Please make sure the school gate is closed behind you when coming or going during the day and students need to be collected from school by 3.15pm (unless they have sports training).

Parking

A reminder that you are NOT to park on the yellow lines, or in front of the school gate to drop off or collect your child/ren. This is to keep everyone safe! Also, the staff carpark is for STAFF ONLY. If you need to come inside due to a mobility issue, please contact the office first.

Safety for Everyone on the Roads

This is a friendly reminder for all our parents and caregivers who drop off and pick up their children near the school. You need to find a safe space to stop to drop off your children. You cannot stop just anywhere and let your children out, when they cannot see any oncoming traffic. We are observing this in the mornings, especially when children hop out of their cars and just cross the road without checking for traffic. This could end up in a devastating accident. Parents, this is your responsibility, I cannot emphasise this enough. Please, your child/ren's safety is very important to us all.

Birthdays this week and next ...

Friday: Antonio R2
Saturday: Lilly R4A
Monday: Eivarii R17, Lincoln R6B and Annamariosolosolo R17
Tuesday: Vanesa R16



Best Attendance

Well done to these classes for having best attendance in Week 7. Mr Whippy will visit on Friday to reward you:

Whenua: R5 and R13A 91% Moana: R25 92%
Aorangi: R11A 98% Atea: R2, R3 and R9 95%



School Website

Have you checked out our Sutton Park School Website lately? It is a great place to find information you may need, such as stationery lists, where to buy uniforms, who the different staff members are, copies of the latest newsletters, and a calendar to keep you up to date with what is going on. It is also an easy way to report a student absence or update your contact details.

Breakfast Club



Breakfast Club is open Tuesday-Friday mornings. All students are welcome to come to the tech block for a free breakfast (weetbix or toast with milo or fruit) served between 8.15am-8.45am.

Camp Payments

Payments can be made in the office by Eftpos or cash, or via bank transfer from the convenience of home: ASB 12 3079 0198868 00 (Sutton Park School Board) Please use your child's name and CAMP26 as references.

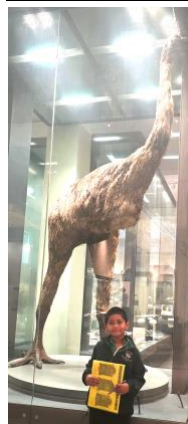
New Entrant Enrolments and Transitioning Term 2 2026

Students turning 5 / new entrants **must** transition before starting school.

Week 8 - Tues - Thurs 9 June- 11 June (transitioning) 9am-11am
Week 9 - Intake 5 - From Monday 15 June
Week 10 - Tues - Thurs 23 June- 25 June (transitioning) 9am-11am

Interested in your tamariki enrolling in the Rūmaki...

You can come and visit the Rūmaki Māori every second week of Term 2 - Thursday mornings between 10am-11am.



Some images of the Rumaki Trip to the museum last month.





Sutton Park School Newsletter – 10 June 2026

Ph. 276-4560

Email: office@suttonpark.school.nz

--	--



Sutton Park School Newsletter – 10 June 2026

Ph. 276-4560

Email: office@suttonpark.school.nz